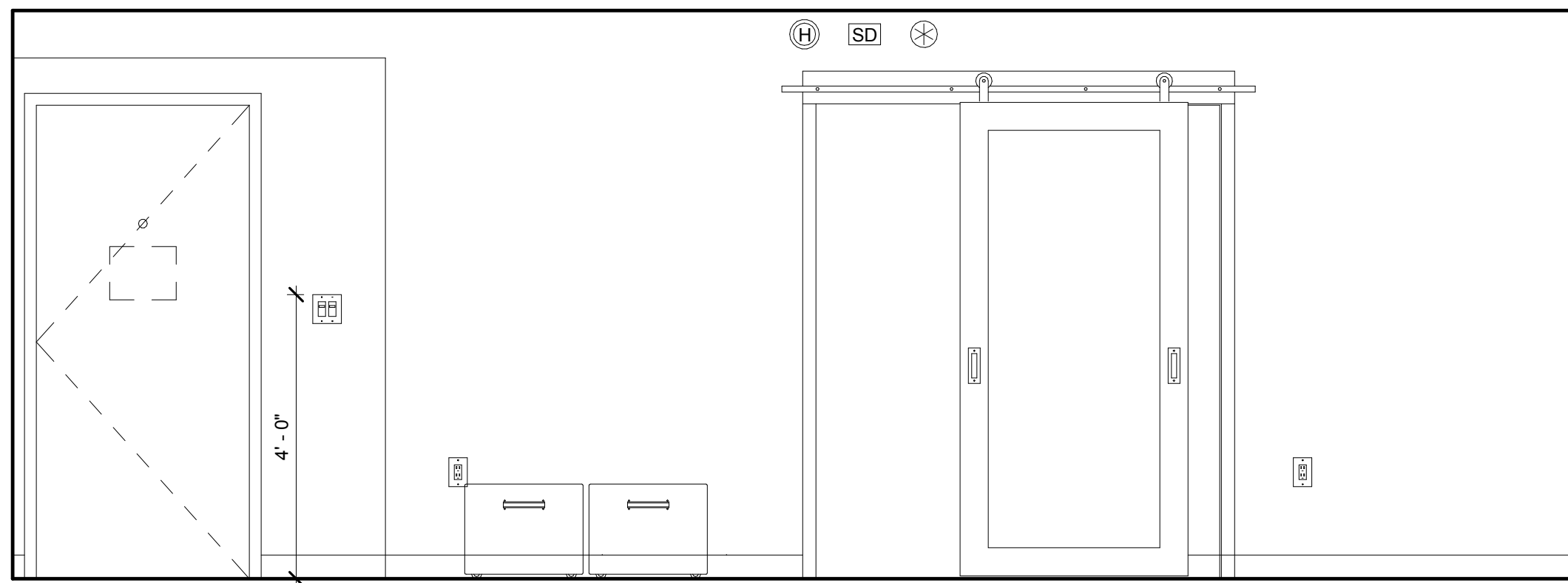
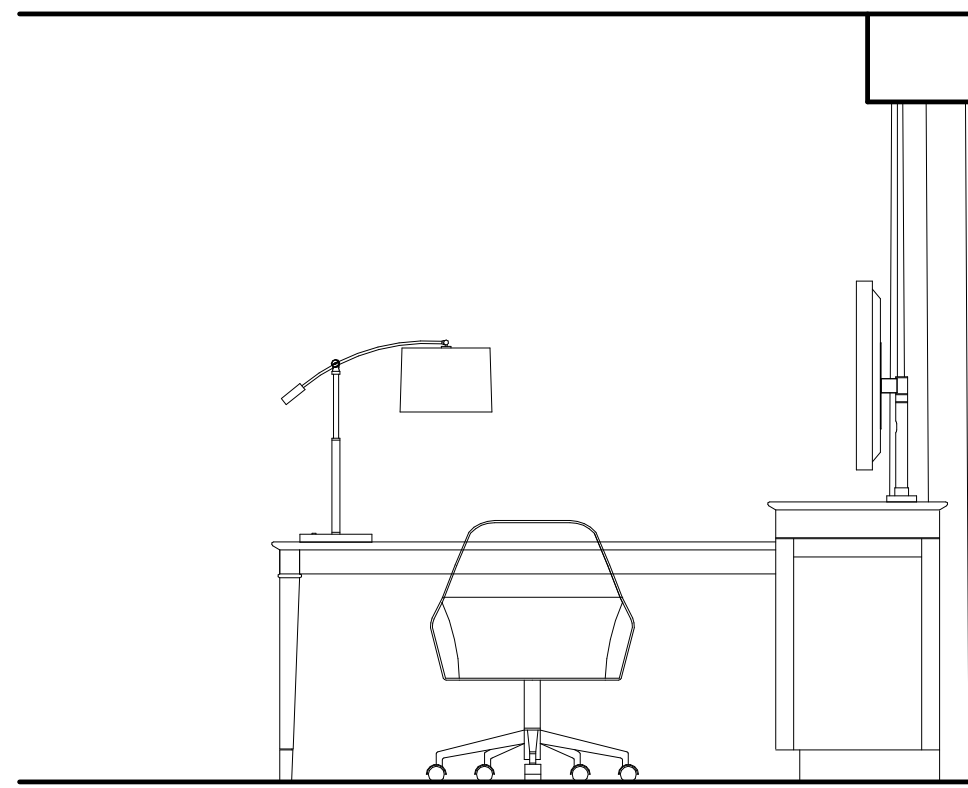


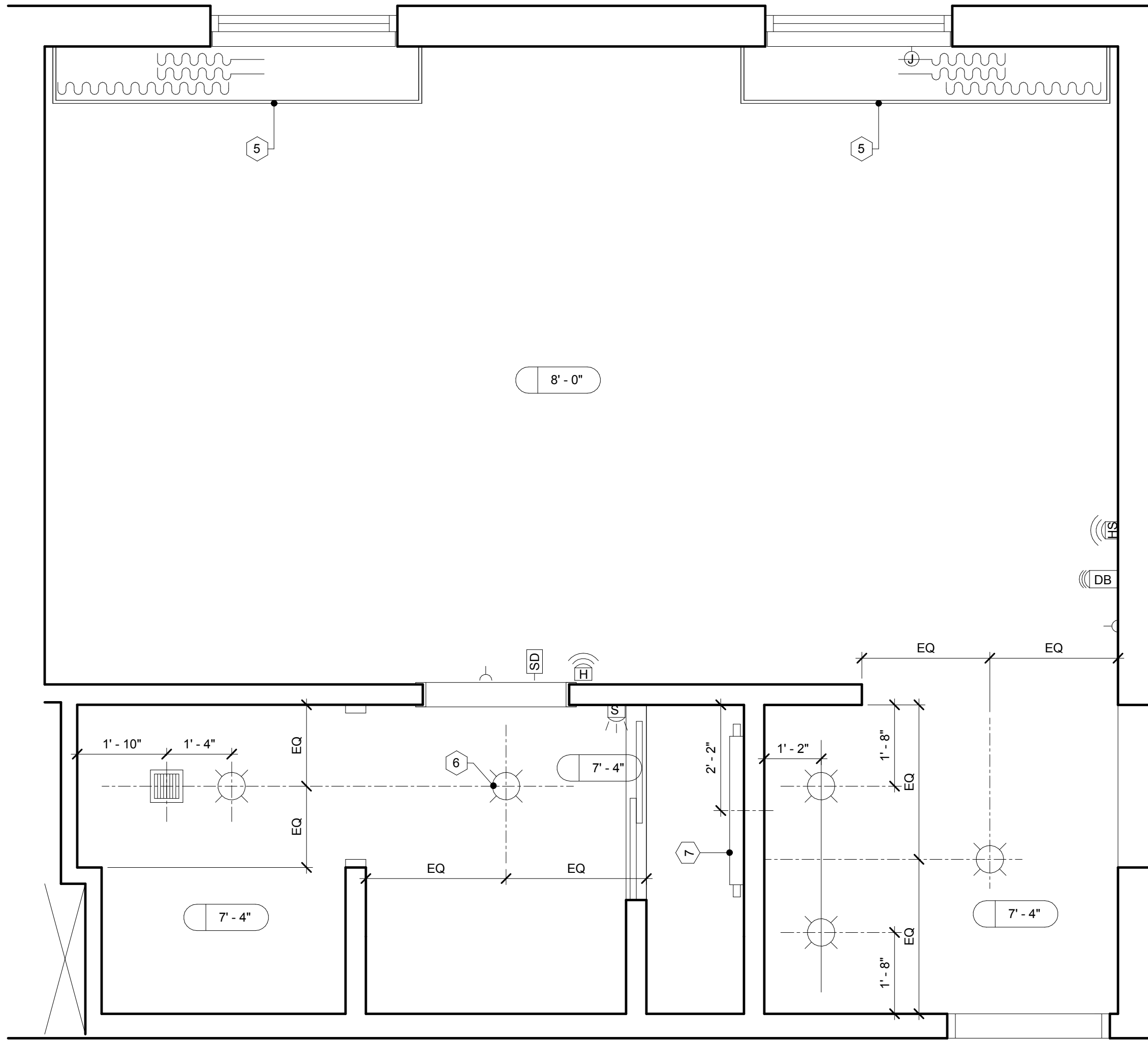
4 Interior Elevation
1/2" = 1'-0"



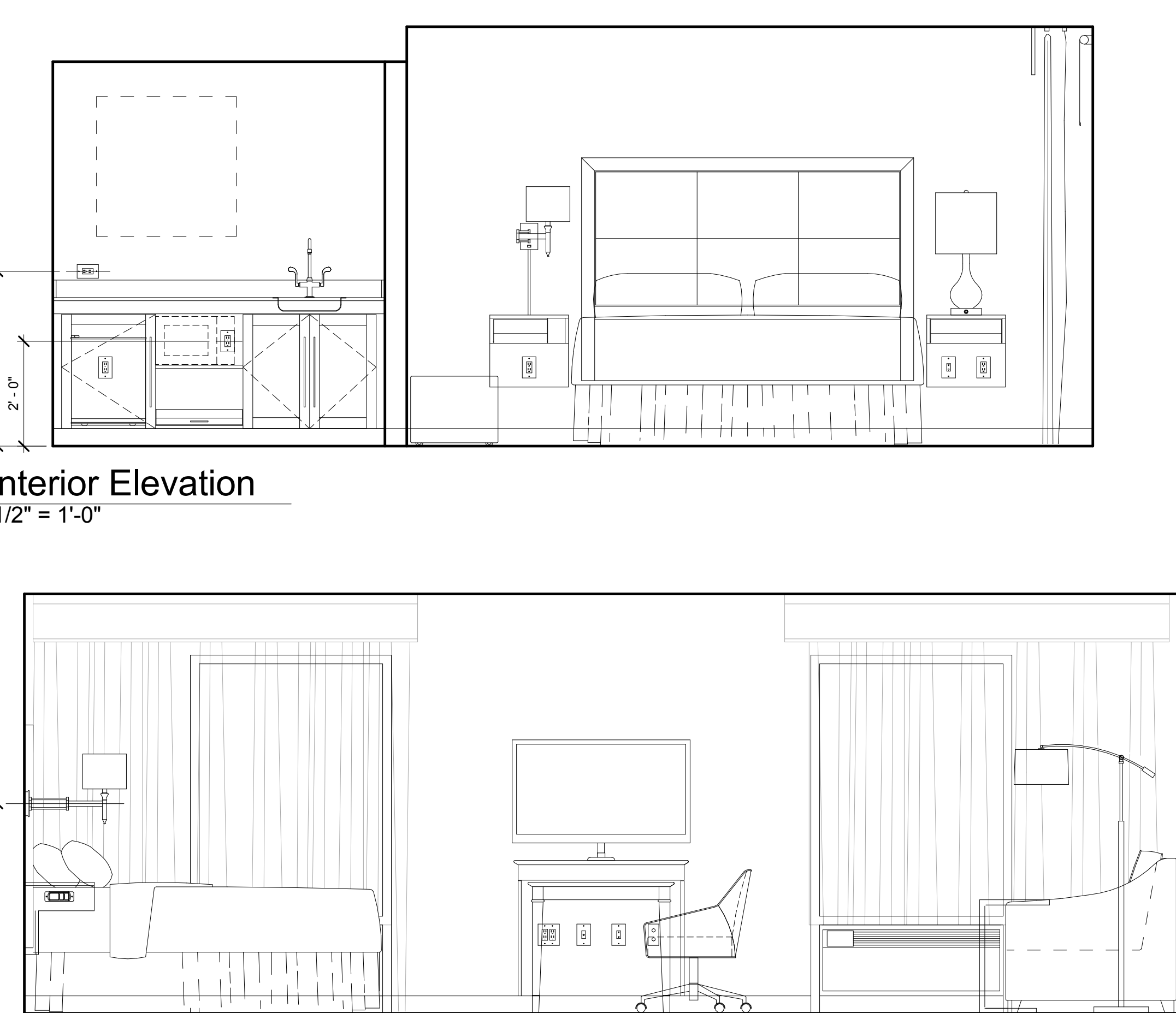
5 Interior Elevation
1/2" = 1'-0"



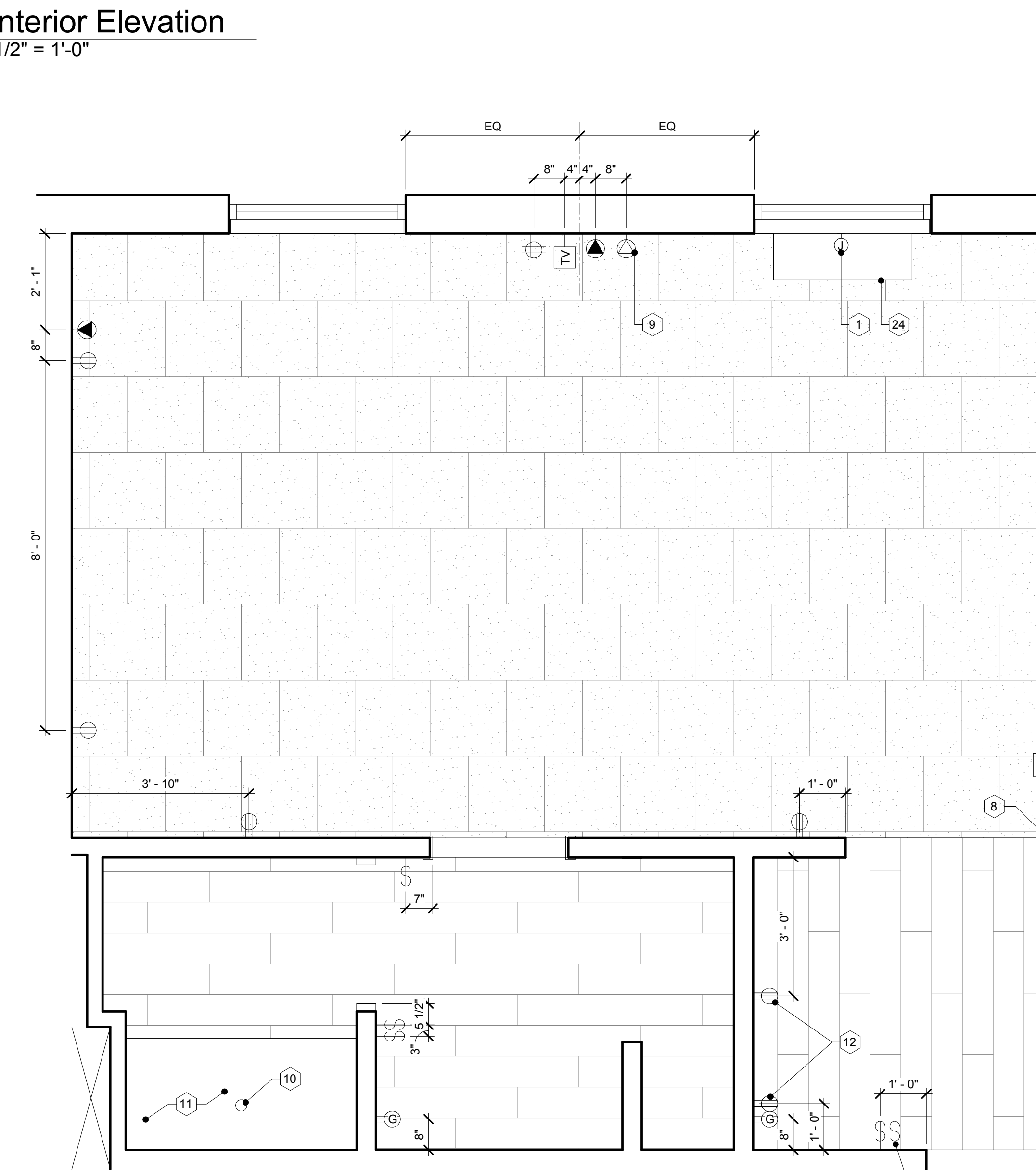
8 Interior Elevation
1/2" = 1'-0"



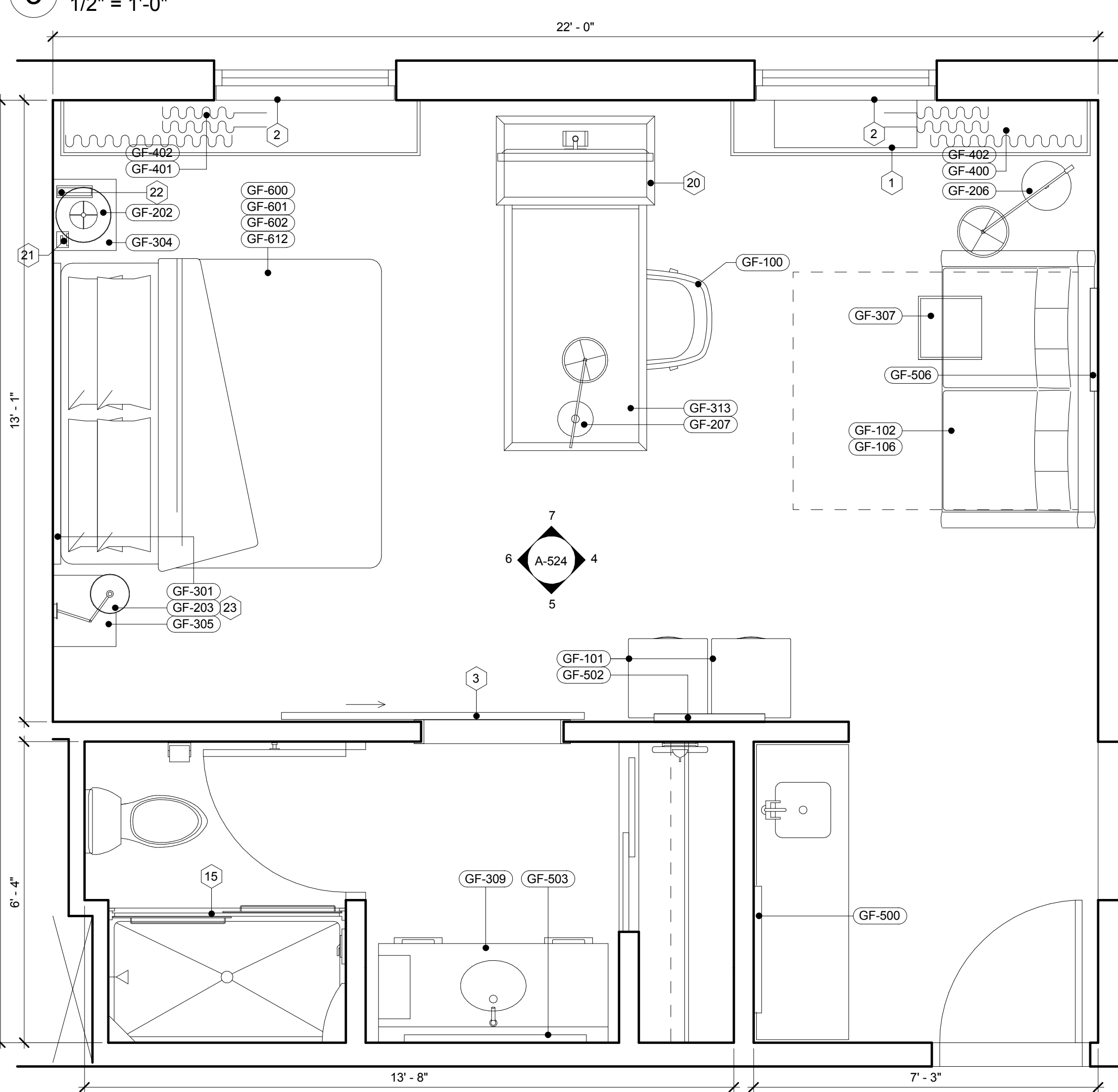
3 Enlarged Reflected Ceiling Plan
1/2" = 1'-0"



6 Interior Elevation
1/2" = 1'-0"



2 Enlarged Finish Floor Plan
1/2" = 1'-0"



1 Enlarged Double Queen Plan
1/2" = 1'-0"

GUESTROOM KEYNOTES

- 1 HARDWIRED PACKAGED TERMINAL AIR CONDITIONER (PTAC) UNIT.
- 2 EXTERIOR WINDOW AND ASSOCIATED TREATMENTS
- 3 BARN DOOR ON EXPOSED HARDWARE - REFER TO DOOR SCHEDULE FOR MIRROR INSET APPLICATION
- 4 COMMUNICATING DOOR LOCATION WHEN USED
- 5 ARCHITECTURAL MILLWORK VALANCE PAINT TO MATCH GENERAL WALL COLOR - ANCHOR FROM CEILING
- 6 LIGHTS IN THIS AREA MUST BE DAMP LOCATION RATED W/ SHATTER PROOF LENSES.
- 7 WALL MOUNTED VANITY LIGHT - PROVIDE JUNCTION BOX, COORDINATED WITH FIXTURE
- 8 STARTING POINT OF TILE - BEGIN WITH FULL TILE
- 9 ALL ROOMS TO HAVE HSIA PER HILTON STANDARDS. IF HARDWIRED INTERNET ACCESS IS DESIRED, A RECEPTACLE MUST BE PLACED @ 34" A.F.F.
- 10 SHOWER / BATH DRAIN LOCATION
- 11 NO FINISHES UNDER SHOWER PAN / TUB
- 12 PROVIDE DEDICATED ELECTRICAL CIRCUIT FOR EACH UNDERCOUNTER APPLIANCE
- 13 DOORBELL ON/OFF SWITCH FOR COMMUNICATION FEATURE ROOM ONLY - SIGNAGE AS REQUIRED
- 14 THRESHOLD - REFER TO STANDARDS MANUAL
- 15 SHOWER INDICATED, BATH TUBS MAY BE SUBSTITUTED - REFER TO STANDARDS
- 16 DASHED BOXES AND CIRCLES REPRESENT ACCESSIBLE CLEAR FLOOR AREAS - REFER TO ACCESSIBLE PLANS SHEET FOR ADDITIONAL INFORMATION
- 17 ACCESSIBLE DRAPERY CONTROL
- 18 DESK MUST PROVIDE MIN. 30" WIDE CLEAR FLOOR SPACE AND A MIN. 27" HIGH KNEE CLEARANCE
- 19 PROVIDE DRAIN IN THIS LOCATION IN GUEST BATHS EQUIPPED WITH ROLL-IN SHOWERS. DISH DRAIN AT A 6" RADIUS (1:48 SLOPE MAX.) PROVIDE TRAP PRIMER
- 20 FLAT SCREEN TV
- 21 CLOCK
- 22 TELEPHONE
- 23 CENTER SCOSCE ABOVE NIGHTSTAND
- 24 EDGE OF PTAC SKIRT AT FLOOR

GUEST ROOM PLAN NOTES

1. REFER TO LAYOUT DRAWINGS FOR ADDITIONAL DIMENSIONAL INFORMATION
2. REFER TO SCHEDULE FOR PARTITION TYPES; SEE CORRESPONDING TAGS FOR ENLARGED ROOM PLANS, SECTIONS AND DETAILS.
3. PROVIDE 4" CRITICAL DIMENSIONS BETWEEN DOOR OPENING AND WALL AT HINGE SIDE, U.N.O.
4. PROVIDE 18" CRITICAL DIMENSIONS BETWEEN DOOR OPENING AND ALL OBSTRUCTIONS AT FULL SIDE OF DOOR.
5. PROVIDE 12" CRITICAL DIMENSION BETWEEN DOOR OPENING AND ALL OBSTRUCTIONS AT PUSH SIDE OF DOOR.
6. WALLS BETWEEN ADJACENT ROOMS - ELECTRICAL OUTLET LOCATIONS, INCLUDING TV AND TELEPHONE OUTLETS, SHALL BE OFFSET 6" MIN. HORIZONTALLY - BACK TO BACK OUTLETS ARE NOT ALLOWED
7. COMMUNICATION FEATURE ROOM MUST HAVE A VISIBLE NOTIFICATION DEVICE FOR THE TELEPHONE.
8. ACCESSIBLE ROOMS SHALL BE EQUIPPED WITH TOGGLE - TYPE SWITCHES
9. PROVIDE ADEQUATE F.R.T. BLOCKING AT ALL PARTITIONS TO HAVE WALL MOUNTED CASEWORK, MILLWORK, OR SHELVING TO ACCOMMODATE MAXIMUM LOADING. COORDINATE LOCATION OF BLOCKING FOR ARCHITECTURAL AND MEP EQUIPMENT AS REQUIRED.
10. COORDINATE SWITCH, STROBE, THERMOSTAT, AND FIRE EXTINGUISHER LOCATIONS SO AS TO AVOID FURNITURE PANELS, ACOUSTICAL WALL PANELS, SCREENS CASEWORK AND WALL CABINETS.
11. REFER TO SCHEDULE FOR DOOR TYPES AND HARDWARE.

POWER PLAN SYMBOLS

PLAN	ELEV.	
		DUPLEX OUTLET
		QUADPLEX OUTLET
		GFI OUTLET
		TELEPHONE OUTLET
		TV OUTLET
		SWITCH
		REMOTE THERMOSTAT
		SMOKE DETECTOR
		STROBE (IN C.F. ROOMS ONLY)
		FIRE HORN/STROBE (IN C.F. ROOMS ONLY, OMIT FIRE HORNS WHEN THESE ARE USED)
		FIRE HORN (NON-C.F. ROOMS)
		SIDEWALL SPRINKLER HEAD
		DOORBELL LIGHT (C.F. ROOMS ONLY)
		HSIA (WIRED WHERE APPLICABLE)
		JUNCTION BOX
		EXHAUST FAN
		LIGHT AT CEILING
		DOORBELL - MOUNT AT 48" AFF TO CENTER OF BUTTON (C.F. ROOMS ONLY)

FURNISHING LEGEND

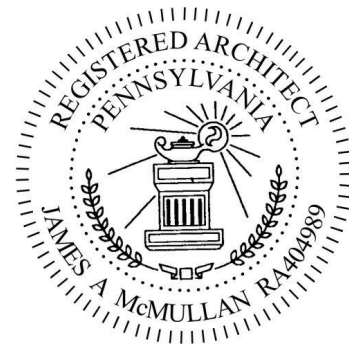
GF-100	ACTIVITY CHAIR
GF-101	OTTOMAN
GF-102	SOFA SLEEPER
GF-103	SINGLE ARM SOFA SLEEPER
GF-104	SINGLE ARM CHAIR
GF-105	LOUNGE CHAIR
GF-201	GUESTROOM VANITY LIGHT
GF-202	BEDSIDE TABLE LAMP AT NIGHTSTAND
GF-203	SINGLE NIGHTSTAND SCOSCE
GF-204	DOUBLE NIGHTSTAND SCOSCE
GF-205	DESK LAMP
GF-206	FLOOR LAMP
GF-300	STREAMLINE UNIT
GF-301	KING HEADBOARD
GF-302	QUEEN HEADBOARD
GF-303	DOUBLE HEADBOARD
GF-304	NIGHTSTAND
GF-305	NIGHTSTAND WITH POWER
GF-306	DOUBLE NIGHTSTAND WITH POWER
GF-307	C-TABLE
GF-308	68" VANITY AT GUEST BATH
GF-309	68" VANITY AT GUEST BATH
GF-310	ADA VANITY AT GUEST BATH
GF-311	STREAMLINE DIVIDER UNIT
GF-312	ADA STREAMLINE DIVIDER UNIT
GF-313	42" VANITY AT GUESTBATH
GF-314	ADA VANITY AT GUESTBATH
GF-315	ADA STREAMLINE DIVIDER UNIT
GF-316	42" VANITY AT GUESTBATH
GF-317	STREAMLINE DESK UNIT
GF-400	WINDOW TREATMENT WITHPTAC
GF-401	WINDOW TREATMENT WITHOUT PTAC
GF-402	ROLLER SHADE
GF-500	ARTWORK AT GUESTROOM
GF-501	ARTWORK AT GUEST BATH
GF-502	ARTWORK AT SOFA IN SUITES
GF-503	FRAMED MIRROR AT VANITY
GF-504	FRAMED MIRROR AT AD VANITY
GF-600	KING BED BASE
GF-601	KING MATTRESS SET
GF-602	KING BEDDING SET
GF-603	ADA KING BED BASE
GF-604	QUEEN BED BASE
GF-605	QUEEN BEDDING SET
GF-606	QUEEN MATTRESS SET
GF-607	ADA QUEEN BED BASE

FINISH LEGEND

B	BASE	NOTE:
C	CARPET	REFER TO FF&E SPECIFICATIONS
MIR	MIRROR	MANUAL AND COLOR AND
PT	PAINT	MATERIALS SPECIFICATIONS
ST	STONE	MANUAL FOR FURNITURE ITEMS
SF	SPECIAL FINISH	NOT IDENTIFIED WITHIN THESE
T	TILE	DRAWINGS
VCT	VINYL COMPOSITE TILE	
WC	WALL COVERING	
WD	WOOD FINISH	

CEILING LEGEND

	RECESSED LIGHT
	RECESSED ADJUSTABLE DOWN LIGHT FIXTURE
	RECESSED FLUORESCENT LIGHT FIXTURE 24" x 48"
	RECESSED FLUORESCENT LIGHT FIXTURE 24" x 24"
	SURFACE MTD. FLUORESCENT LIGHT FIXTURE 24" x 48"
	WALL MOUNTED LIGHT SCOSCE
	PENDANT LIGHT FIXTURE
	DECORATIVE PENDANT LIGHT FIXTURE
	DIRECTIONAL EMERGENCY EXIT LIGHT
	BATH EXHAUST FAN
	RECESSED SHOWER DOWNLIGHT
	LINEAR DIFFUSER
	RETURN AIR GRILLE
	DIFFUSER
	WALL MOUNTED SPRINKLER
	CEILING SPRINKLER



ISSUE:

Issued for Permit
08.05.2016

PROJECT: 16-018

Hampton Inn & Suites

New Stanton, PA 15672

OWNER:

Stanton Hospitality LLC

52 Blueberry Lane,
Grove City, PA 16127

THESE DRAWINGS ARE FOR REVIEW OF DESIGN AND SCOPE DESCRIPTION ONLY. NO REPRESENTATION IS MADE TO THE ACCURACY OF THE DRAWINGS WITH RESPECT TO EXISTING DIMENSIONS OR CONDITIONS. ALL CONSULTANTS AND CONTRACTORS MUST VERIFY ANY AND ALL DIMENSIONS AND CONDITIONS WHICH ARE CRITICAL TO THEIR WORK. THESE DRAWINGS ARE INSTRUMENTS OF SERVICE AND ARE THE INTELLECTUAL PROPERTY OF JMAC ARCHITECTS. ANY UNAUTHORIZED USE OR REPRODUCTION IS PROHIBITED.

No. Issue Date Project Status

Enlarged Guestroom
Plans and Elevations -
King Studio

As indicated

A-524